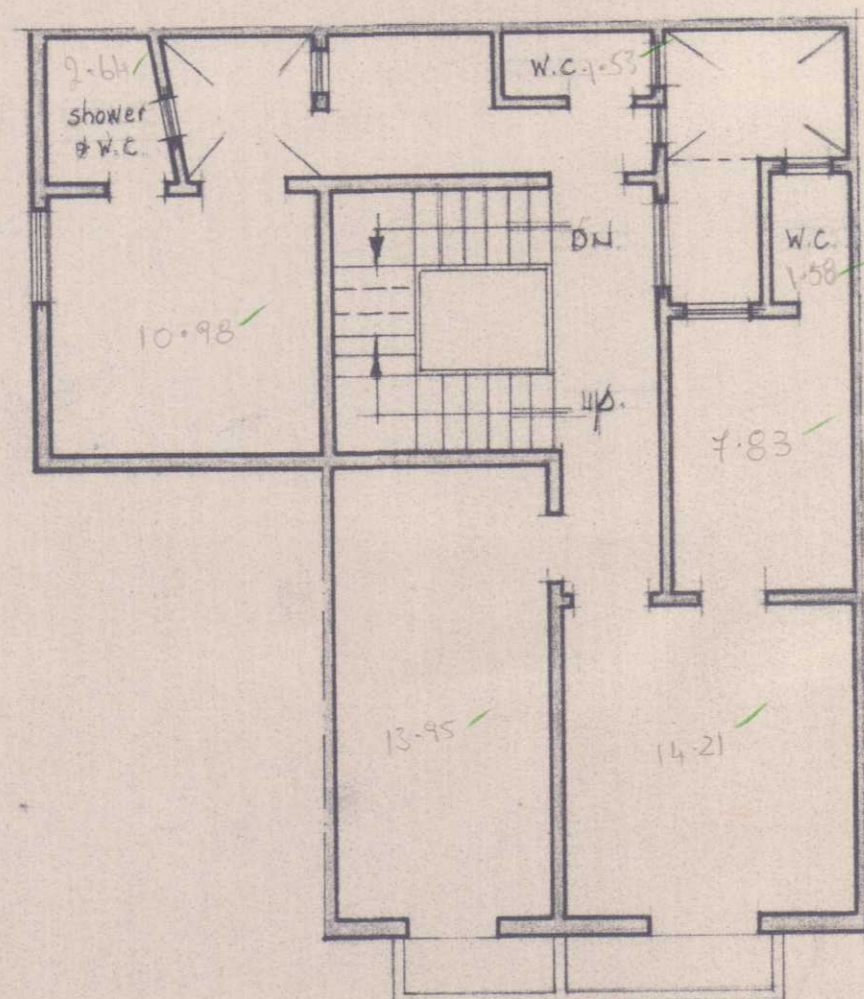
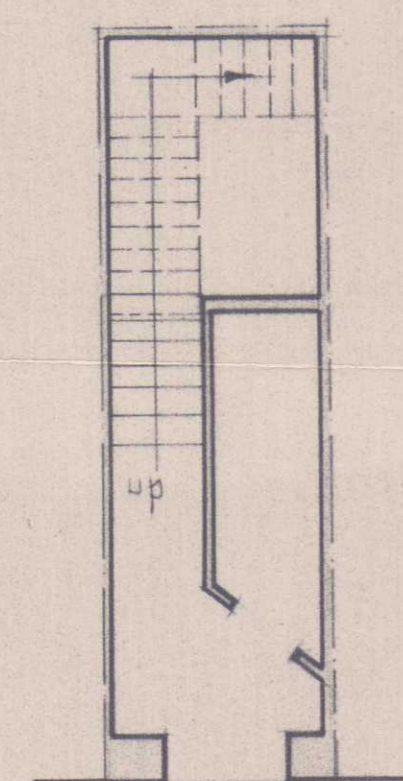


A

L685/88



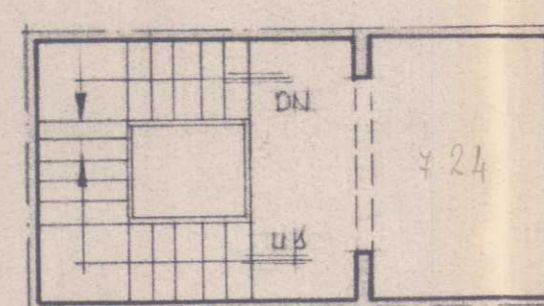
second floor



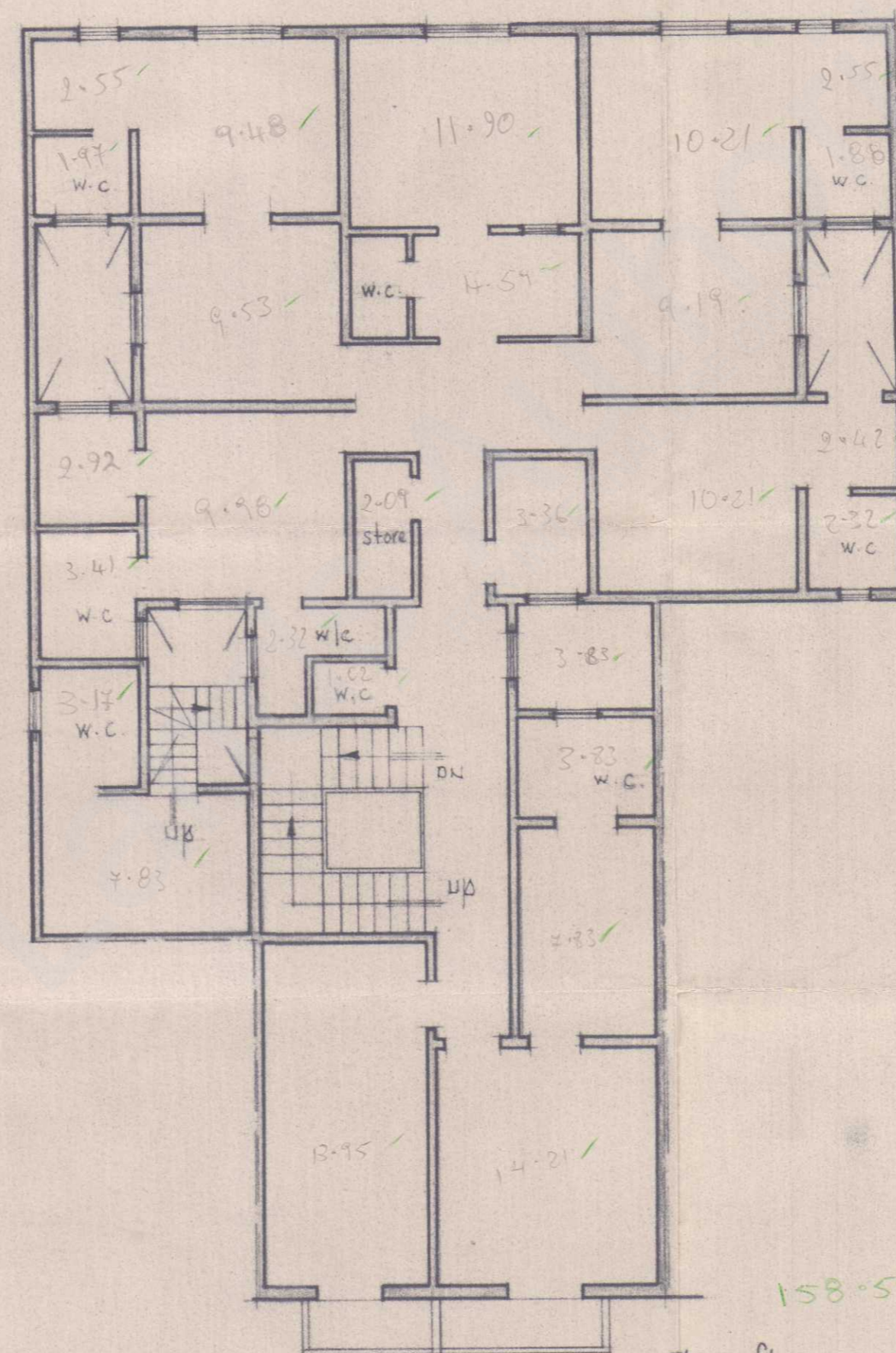
Nº 163

ground floor

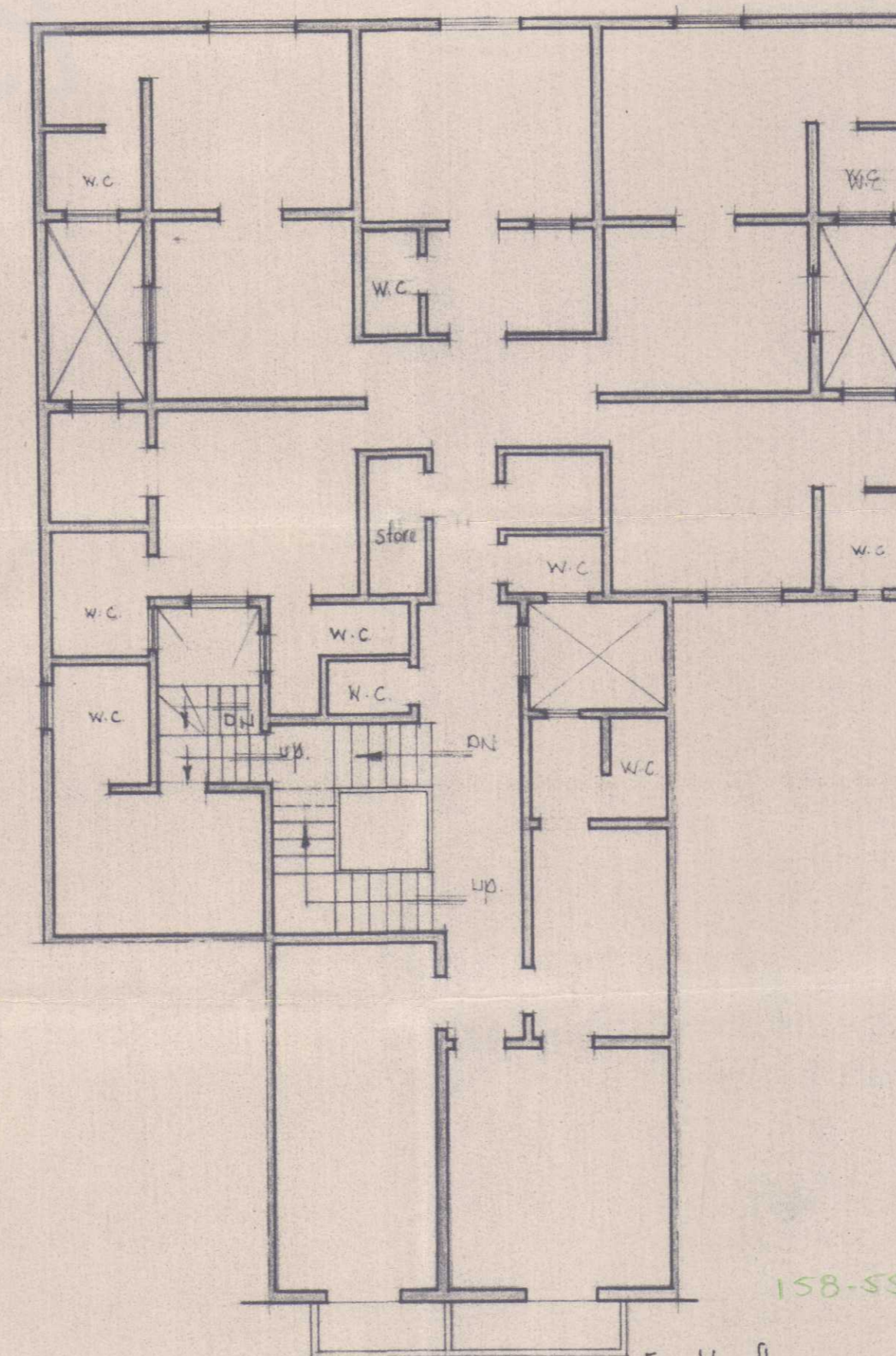
The Strand.



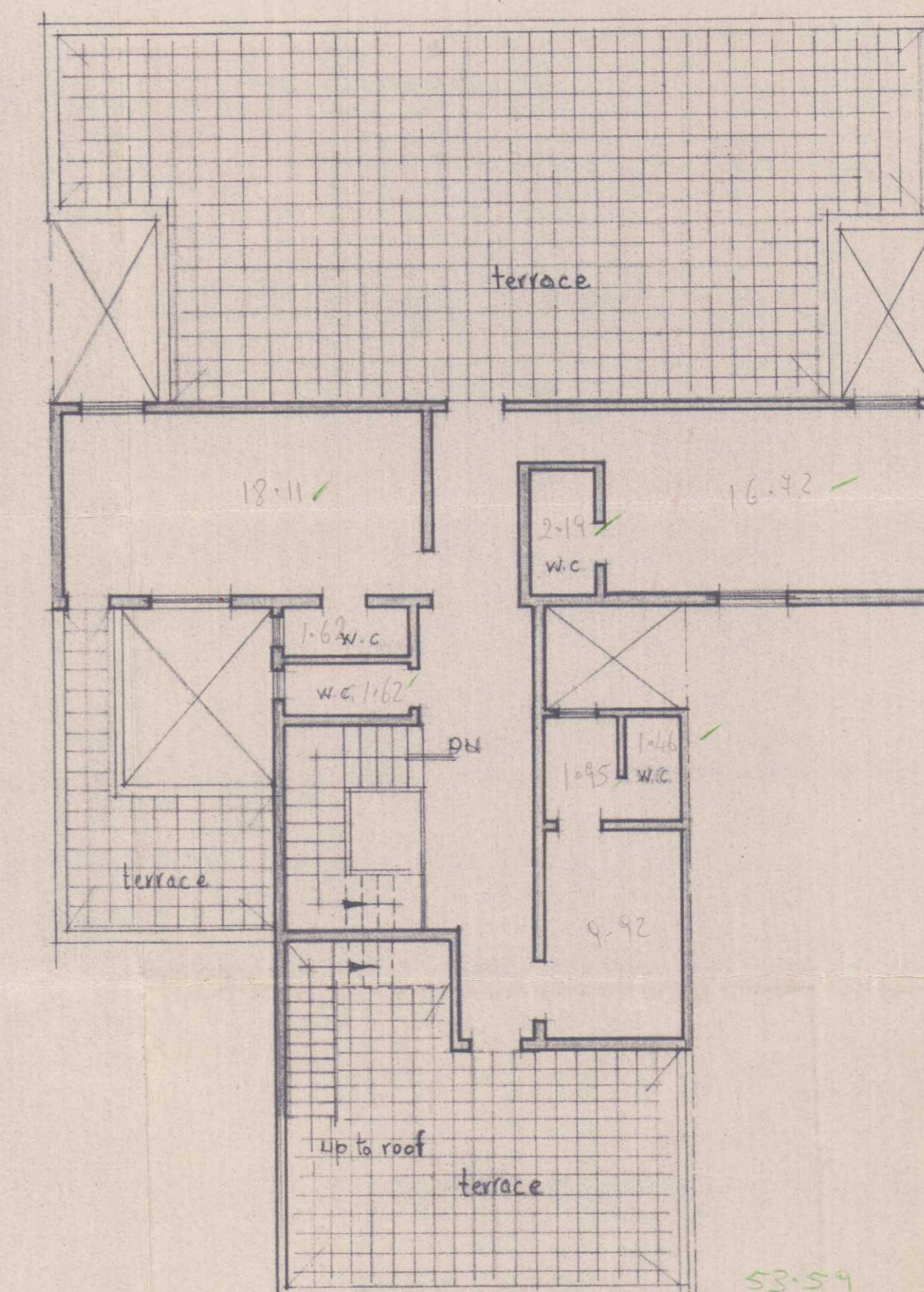
first floor



Third floor



Fourth floor.



Fifth floor.

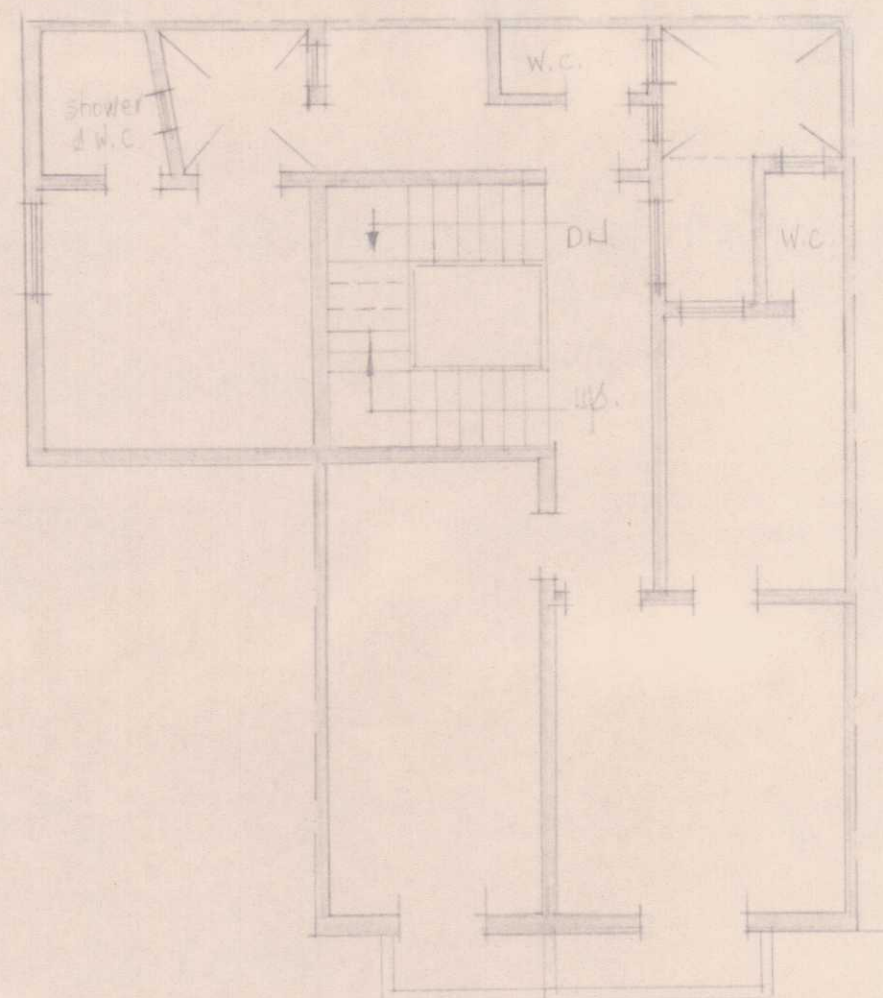
LAND DEPARTMENT - VALLETTA	
LOCALITY: GZIRA.	SCALE: 1/96.
DRWG. No. LD. 291/88	DRAWN:
FILE No. LAND. 685/88ff.	CHECKED:
(Sgd.) O. CARUANA MONTALDO A. & C.E. ENGINEER	(Sgd.) A. GOUDER A/COMMISSIONER
DATE 16 DEC 1988	DATE 16 DEC 1988

1C

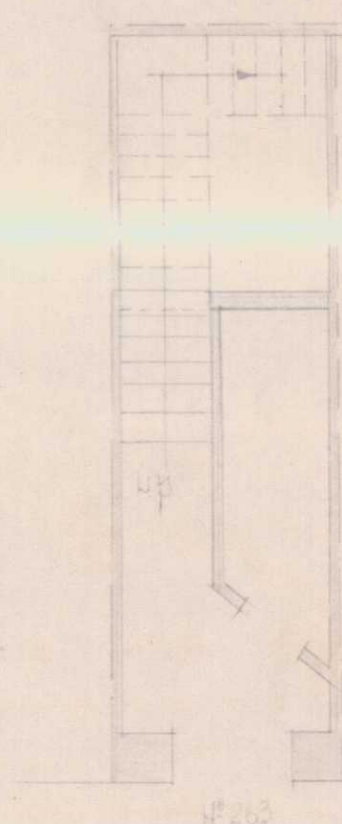
B

L 685/88

GZIRA
Plan of premises No 163
The Strand



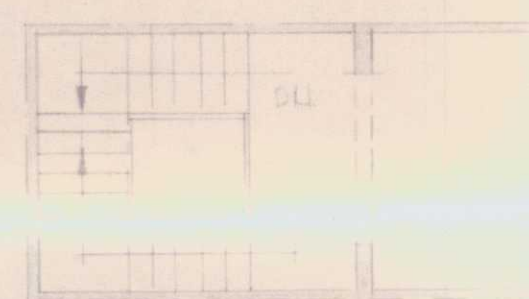
second floor



W 283

ground floor

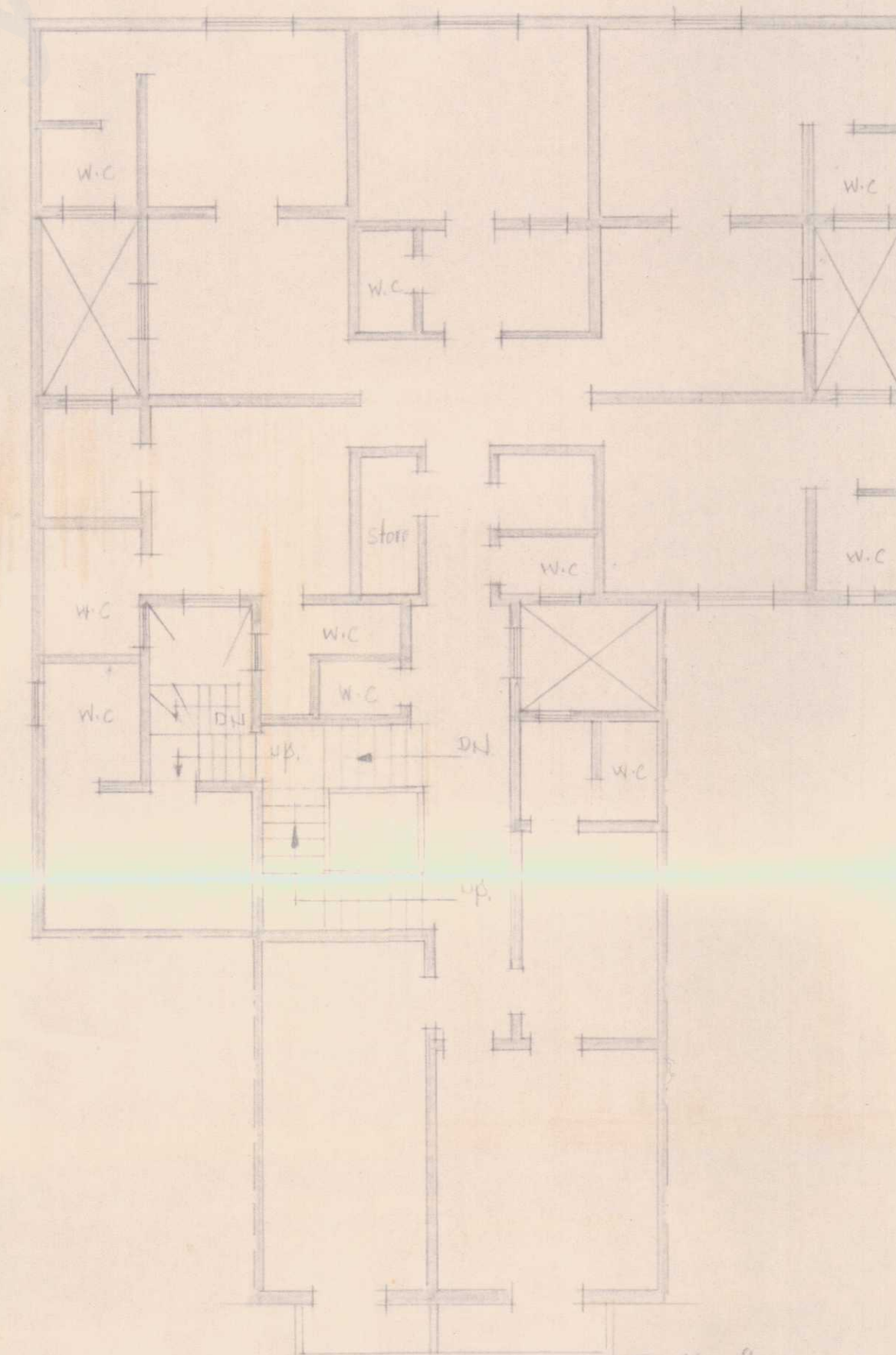
The Strand



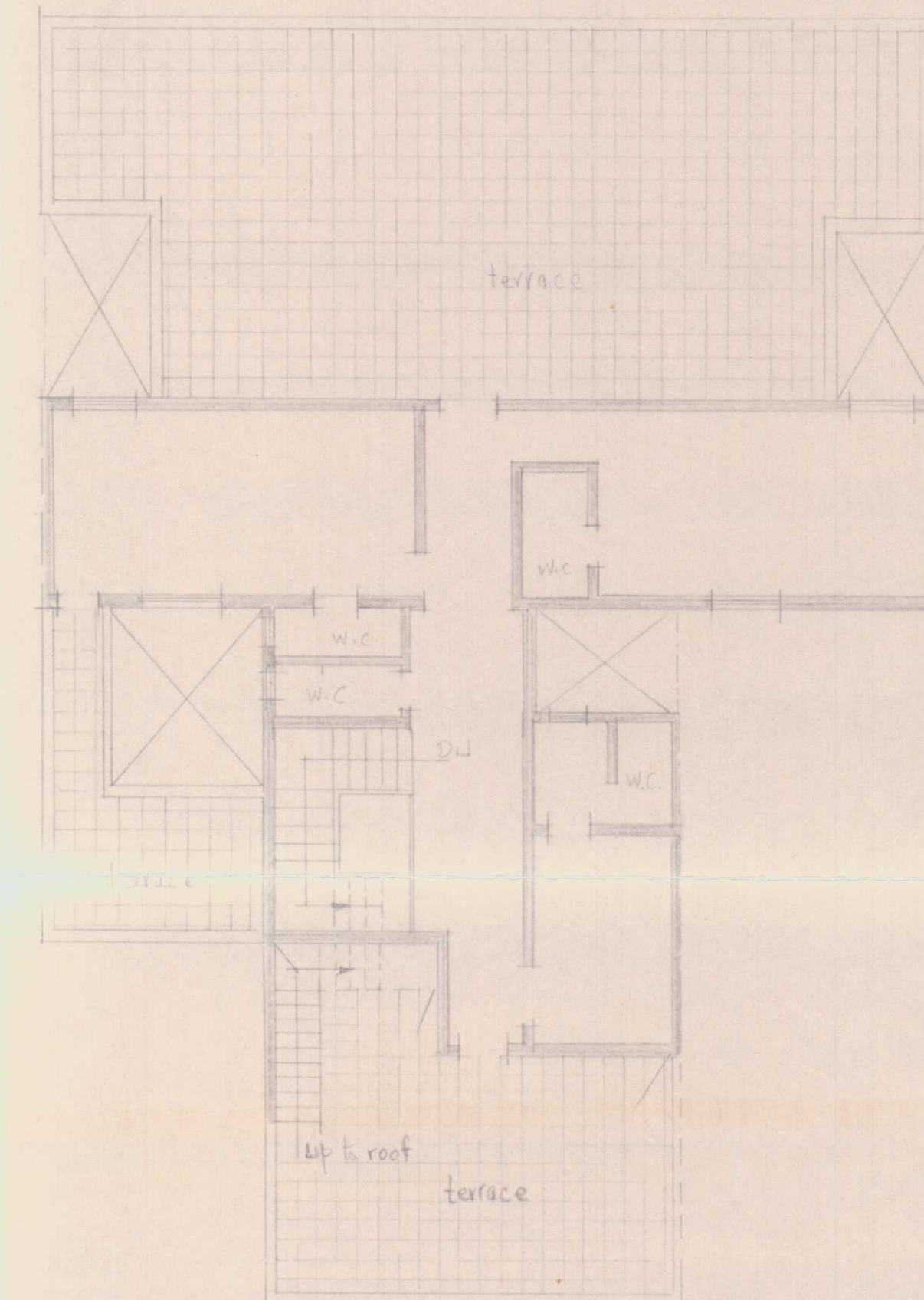
first floor



Third floor



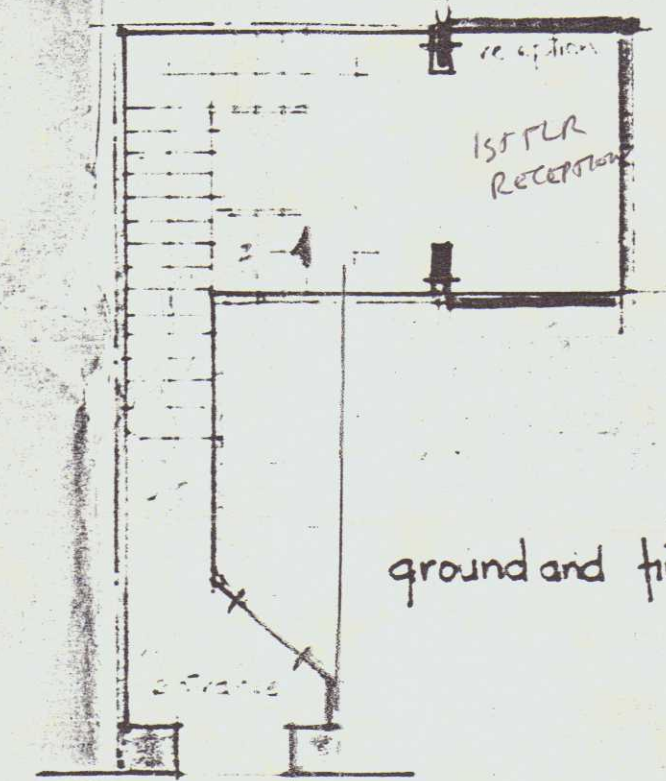
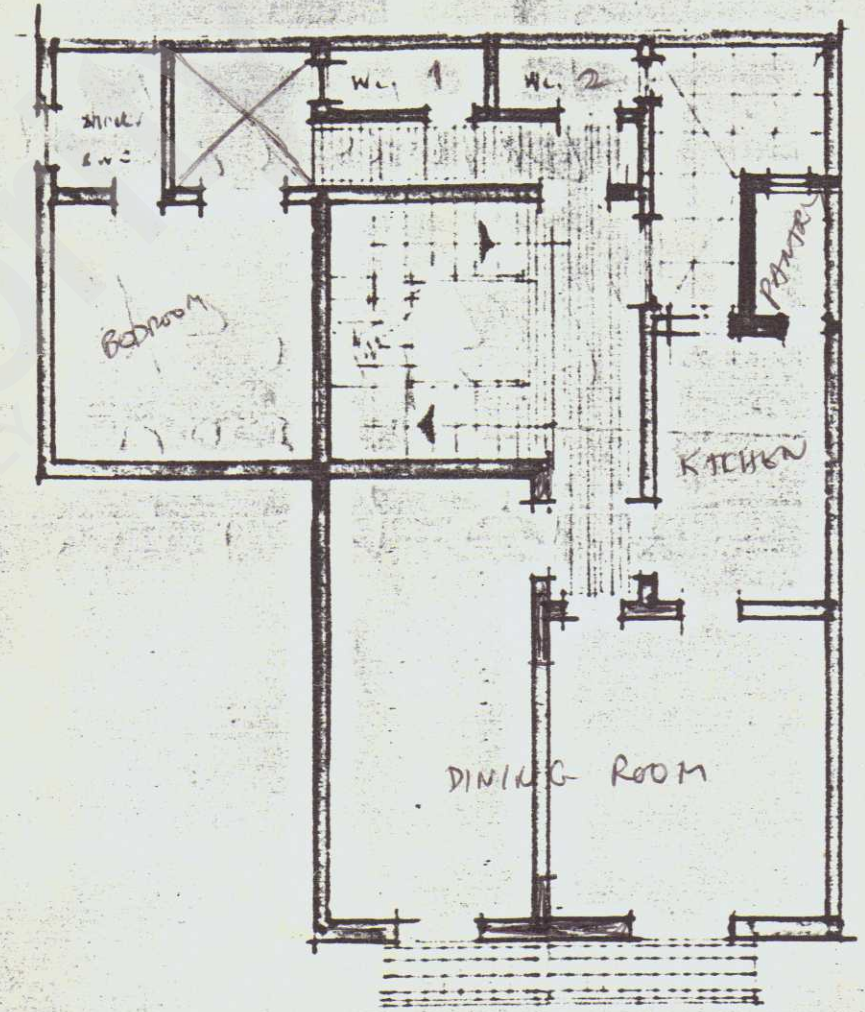
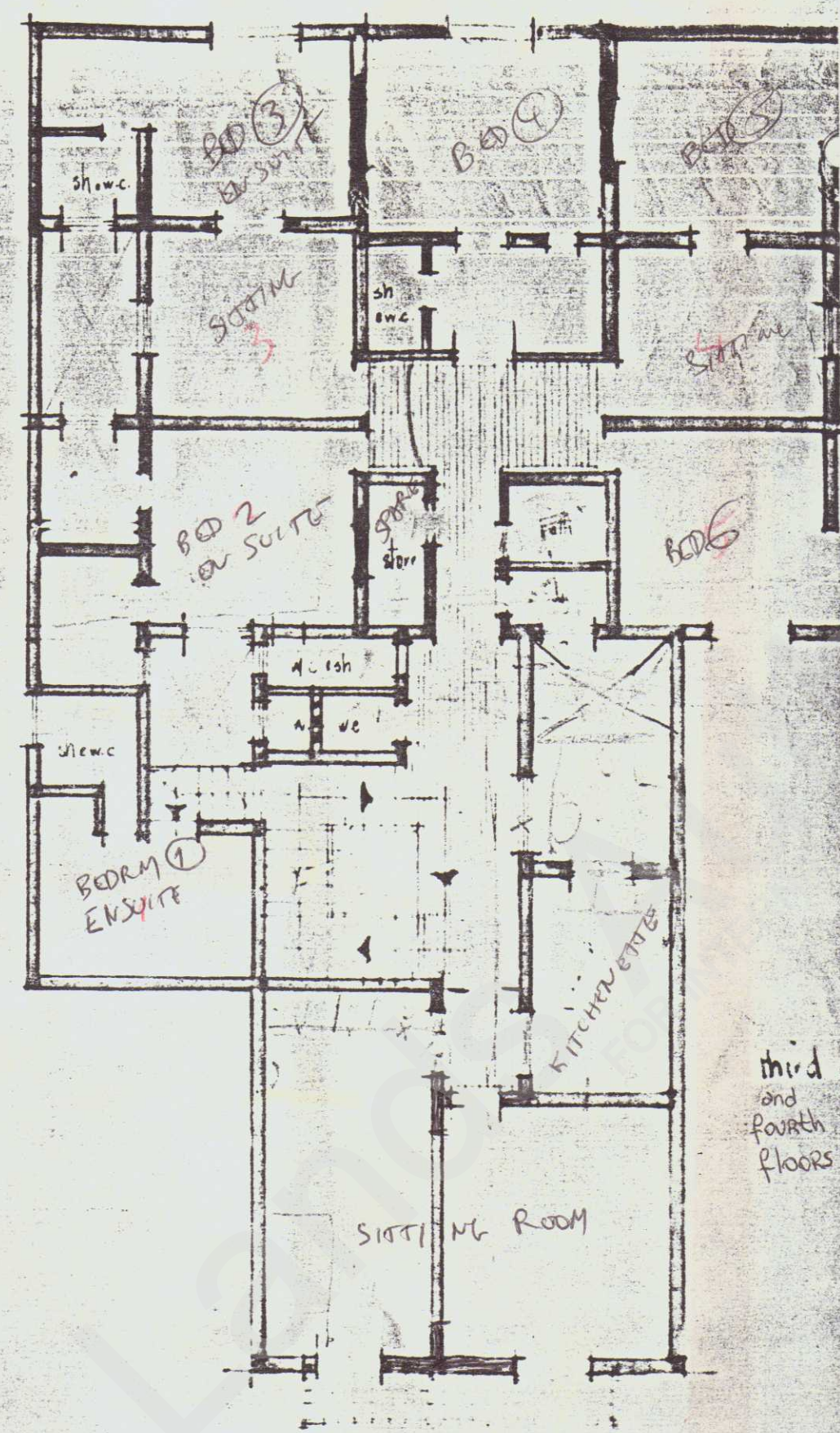
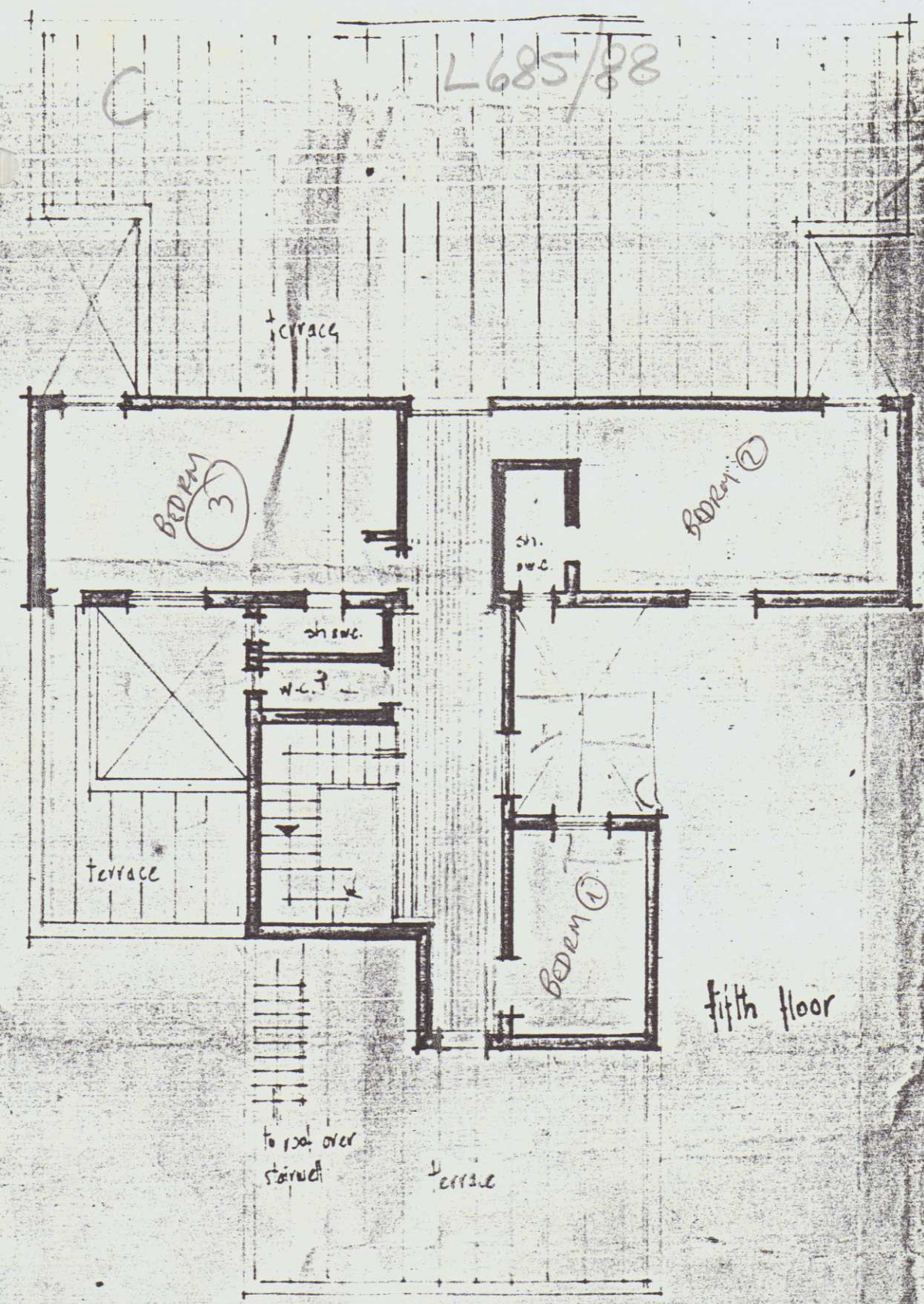
Fourth floor



Fifth floor

Scale: 1:96

1C



John Huntingford

