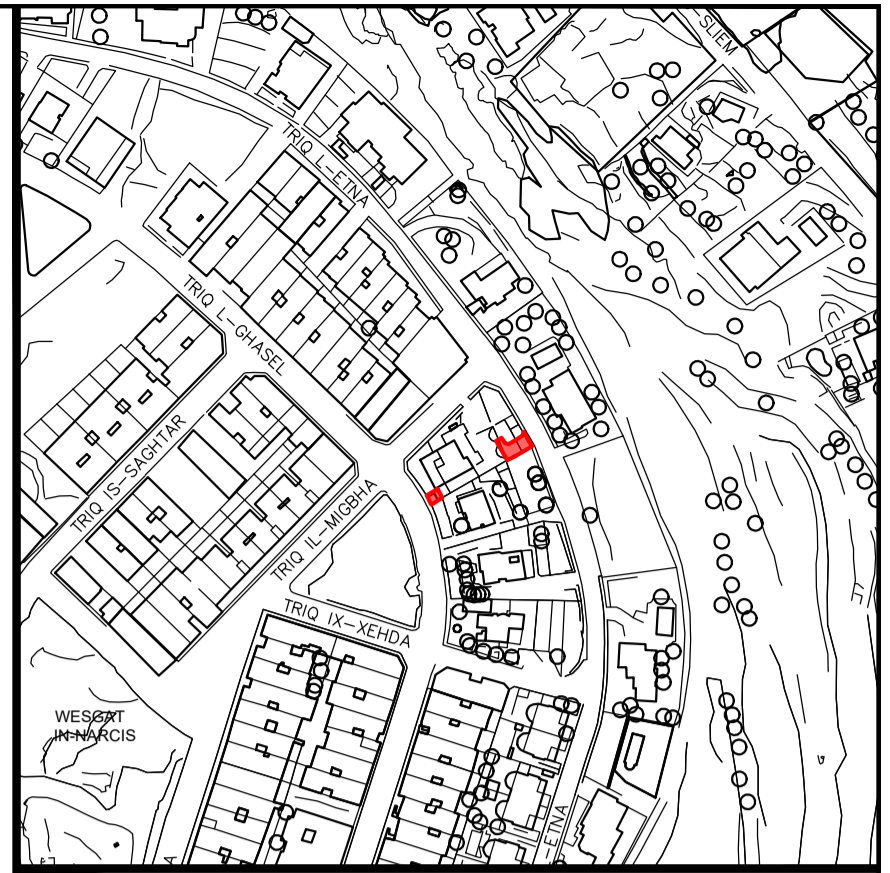


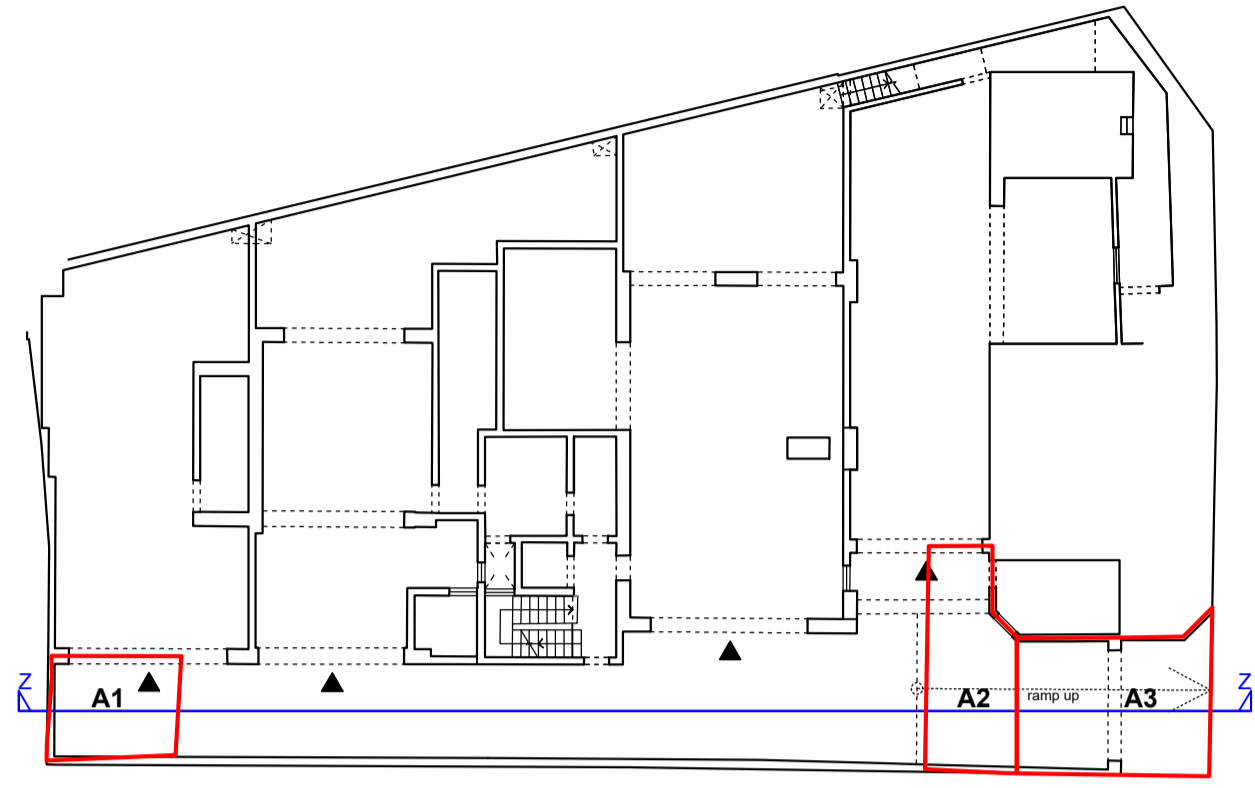
13D

Golden Vista, Common Parts Accessed from Triq I-Ghasel & Triq I-Etna c/w Triq il-Migbha MELLIEHA

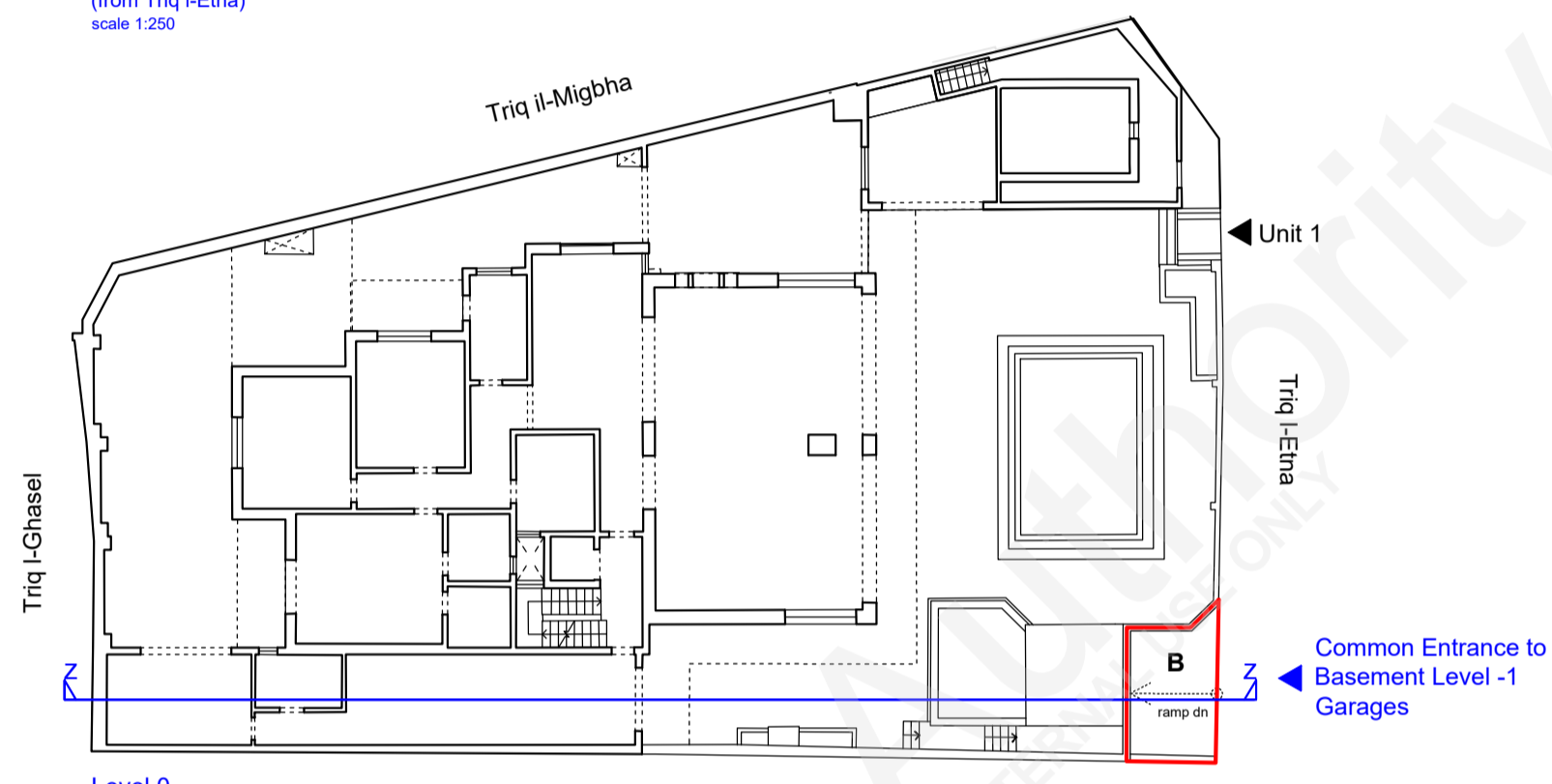


Site Plan
S.S. 4280

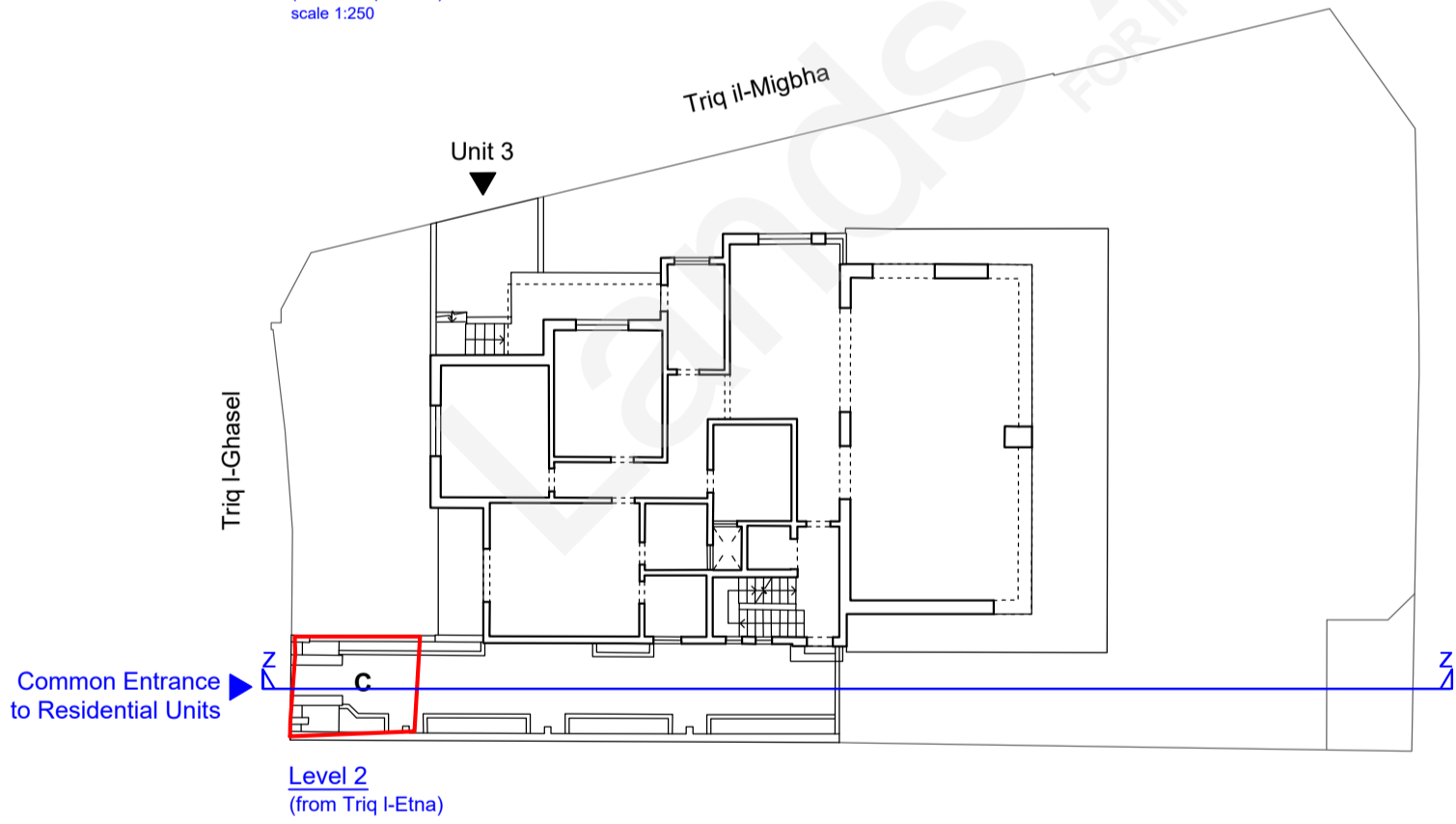
Scale 1: 2500
Map Ref.: 42870
80105



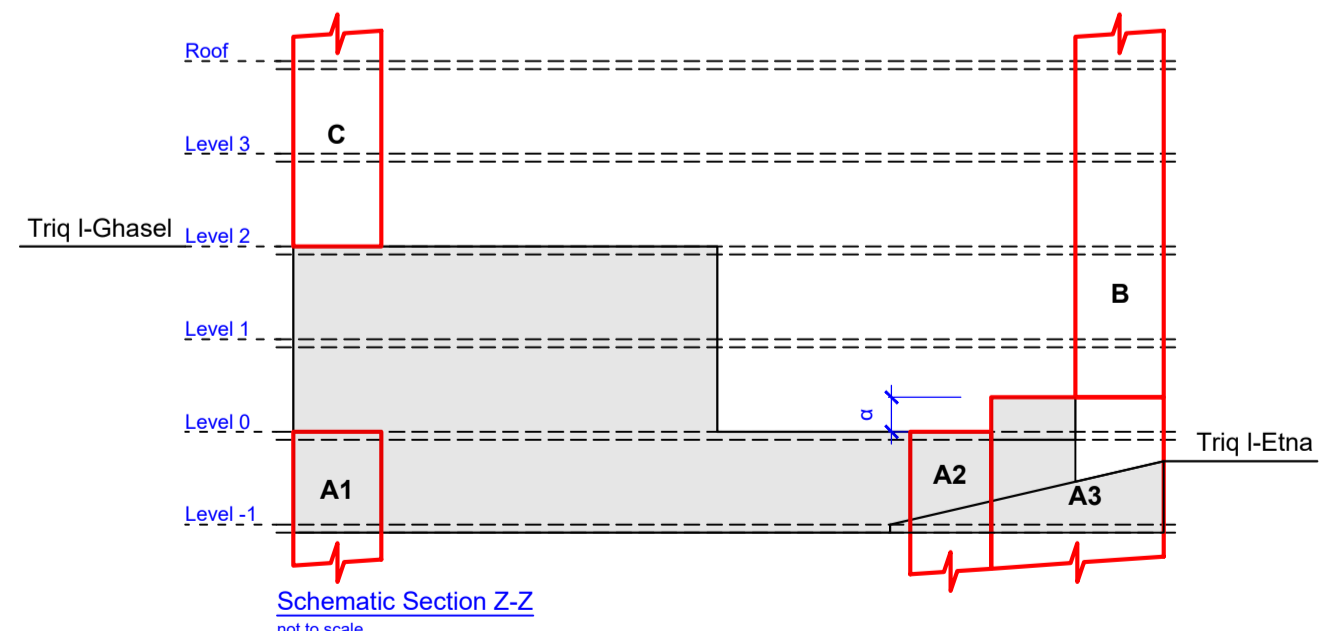
Level -1
(from Triq I-Etna)
scale 1:250



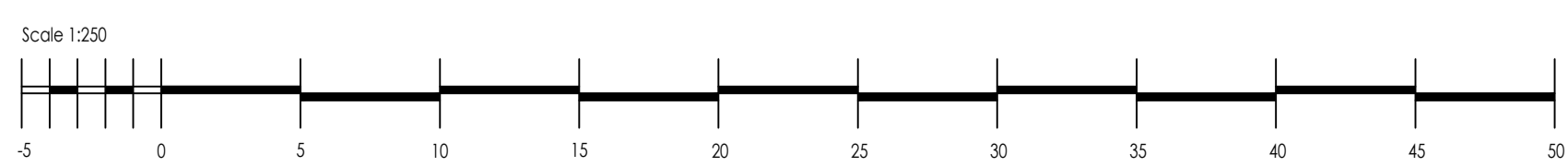
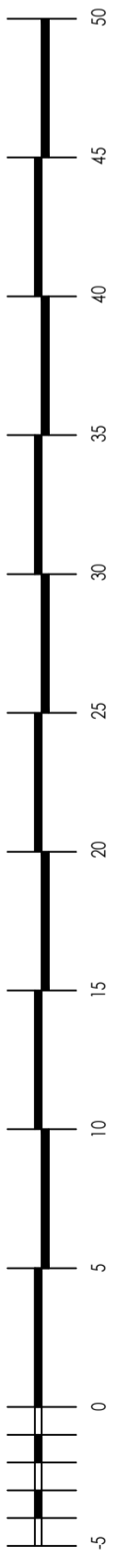
Level 0
(from Triq I-Etna)
scale 1:250



Level 2
(from Triq I-Etna)



Schematic Section Z-Z
not to scale



Property No : E269887

Site up to Level 0, incl. underlying space:

- A1** Area: 14.3m²
- A2** Area: 20.1m²

Site up to 1.14m above Level 0, incl. underlying space:

- A3** Area: 29.5m²

Site from 1.14m above Level 0 upwards, incl. airspace:

- B** Area: 14.6m²

Site from Level 2 upwards, incl. airspace:

- C** Area: 14.2m²

Note:
Section Z-Z is only indicative of the floor levels.
α - A distance of 1.14m above Level 0.

LANDS Authority
Estate Management & Business Development

Auberge de Baviere
St. Sebastian Str, Valletta
Phone (00356) 2295 3238/39/40/42
Website
landsauthority.org.mt

Locality: MELLIEHA	
P.D. No.: 2019_0775	Scale: 1 : 250
File No.: A/0045/2006	Drawn by: bugem151
sgd. (S. Scotto)	
A&CE Date: 30th May, 2022	

Extents interpreted from plans submitted by Architect and Corrected Government Land Registration.