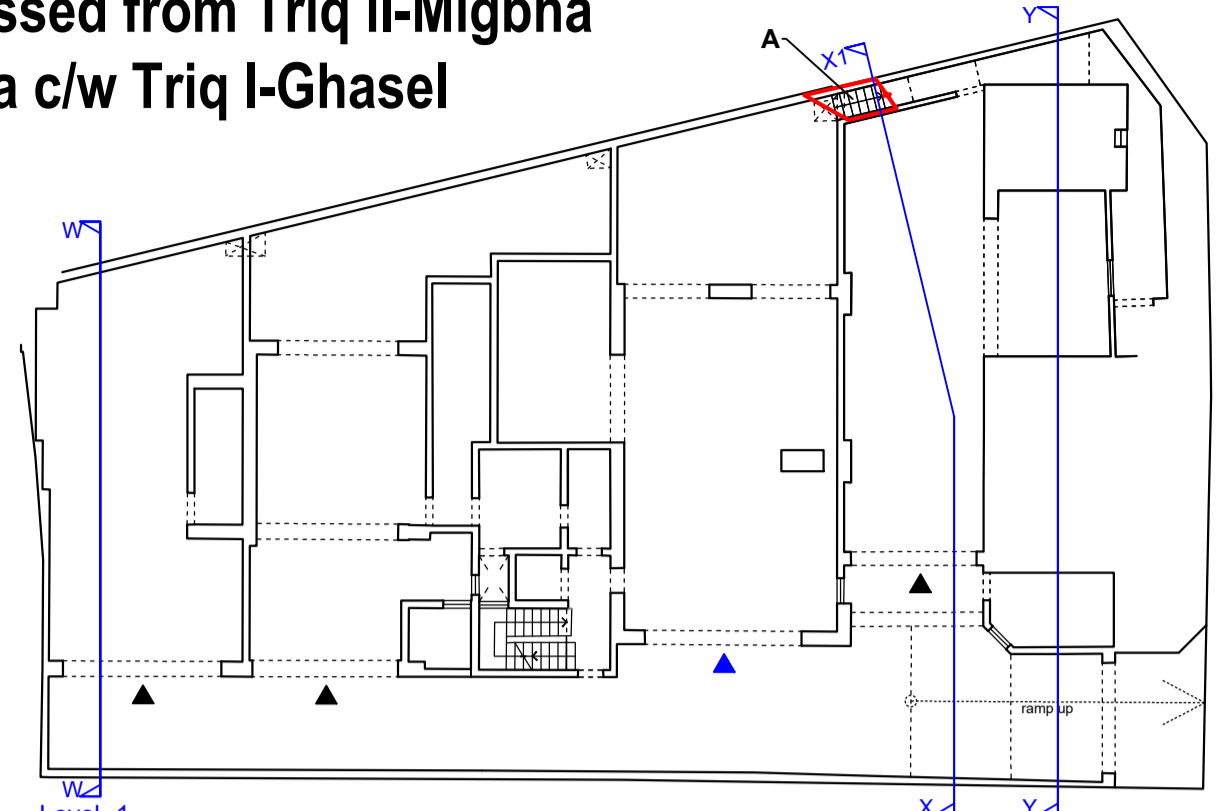
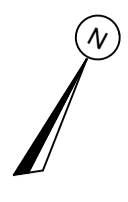
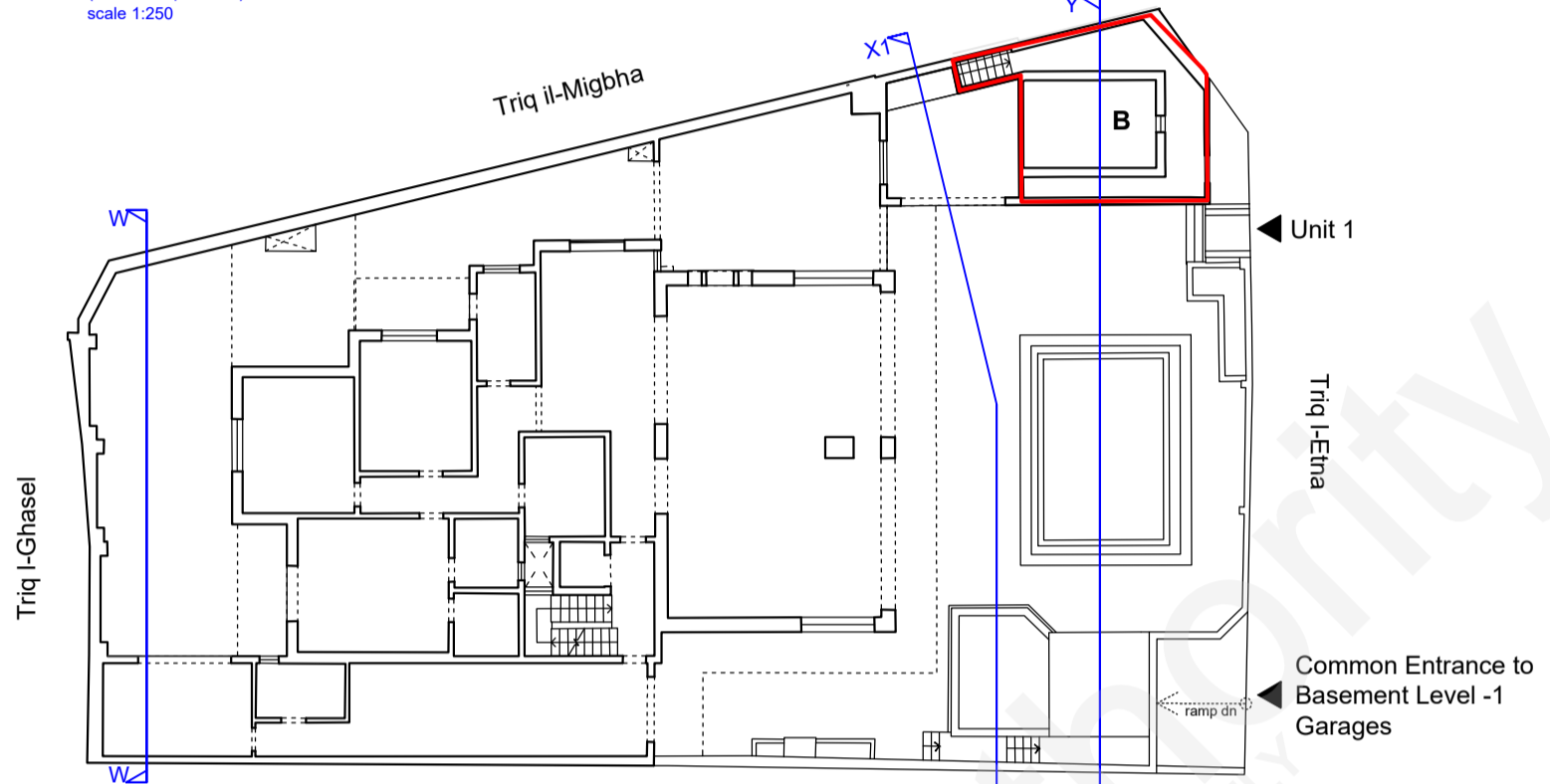


13B

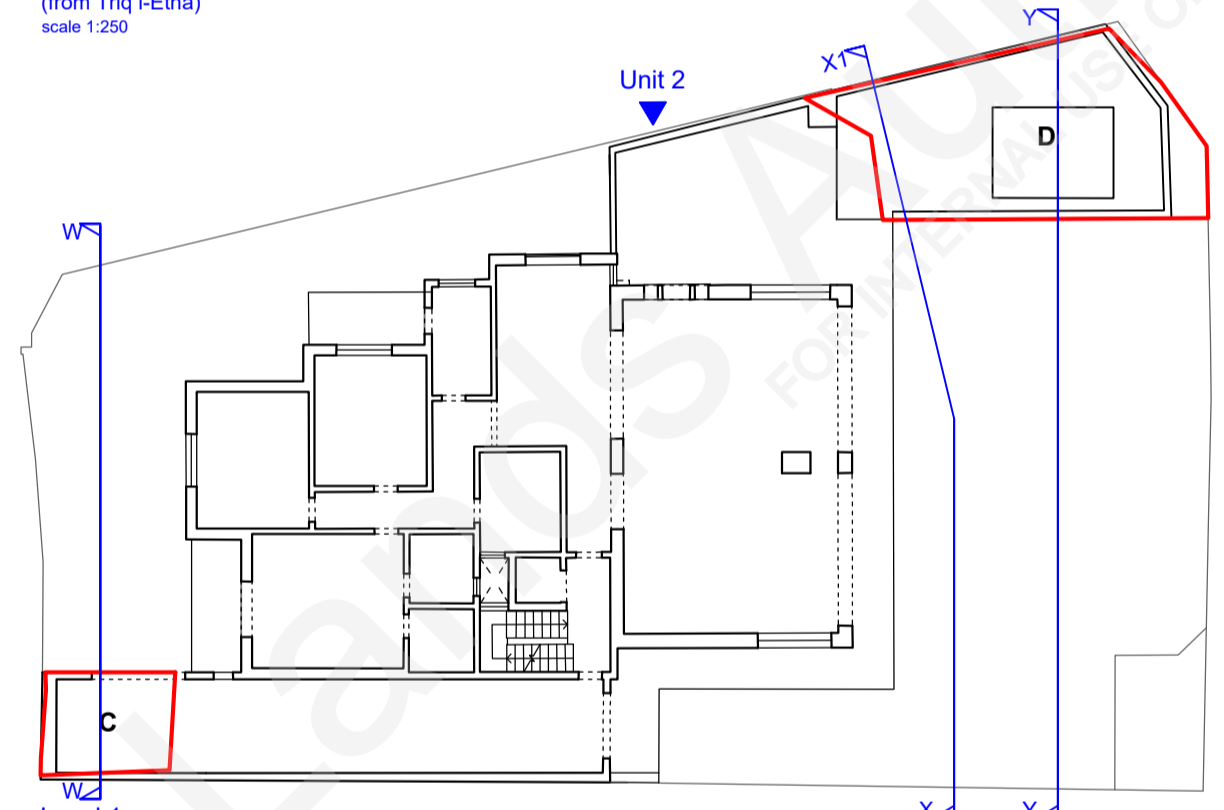
**Golden Vista**  
**Part of Garage accessed from Triq I-Etna**  
**& Unit 2 accessed from Triq il-Migbha**  
**c/w Triq I-Etna c/w Triq I-Ghasel**  
**MELLIEHA**



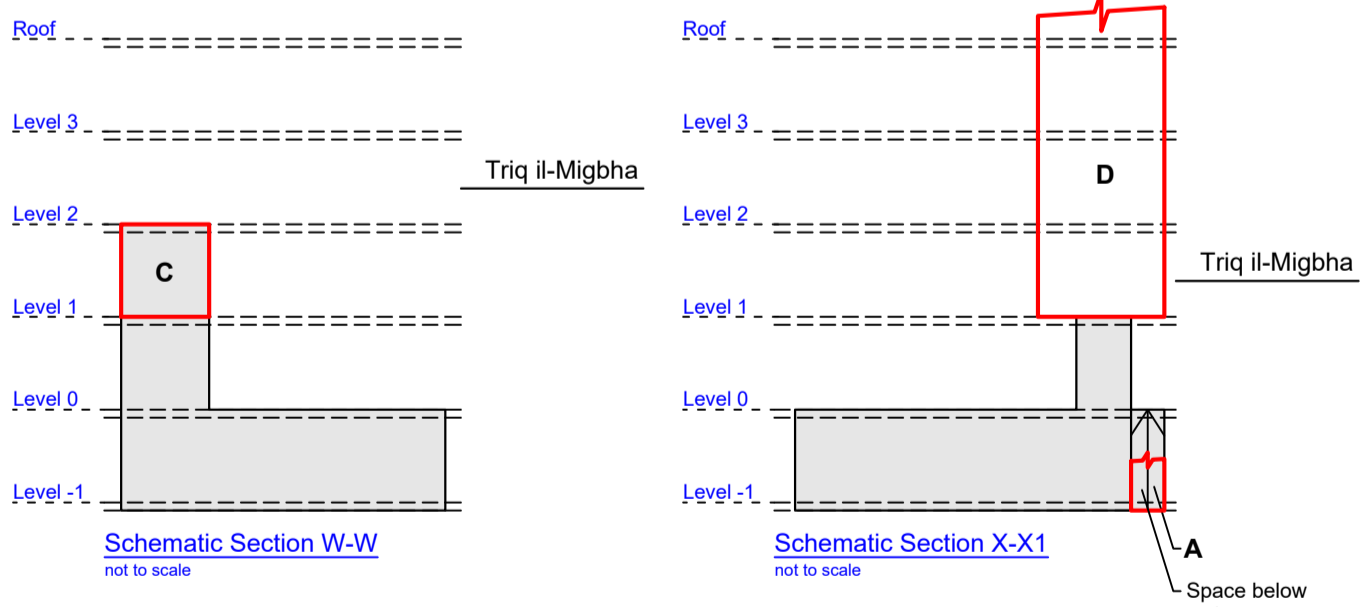
Level -1  
 (from Triq I-Etna)  
 scale 1:250



Level 0  
 (from Triq I-Etna)  
 scale 1:250

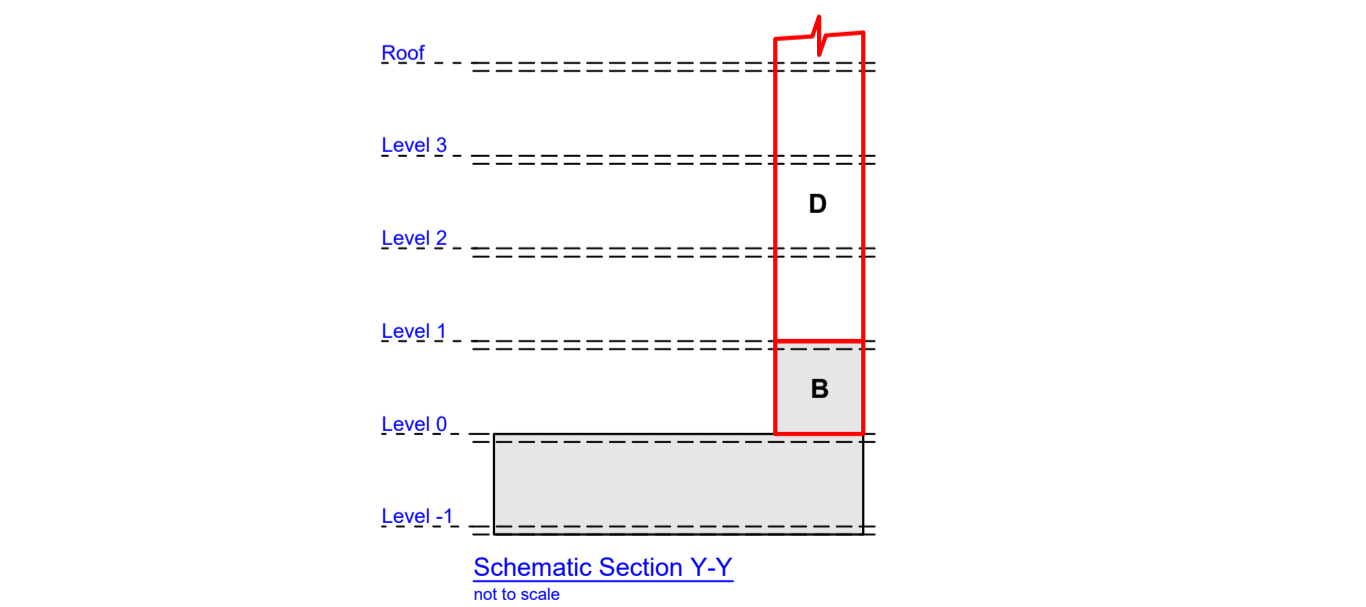


Level 1  
 (from Triq I-Etna)  
 scale 1:250

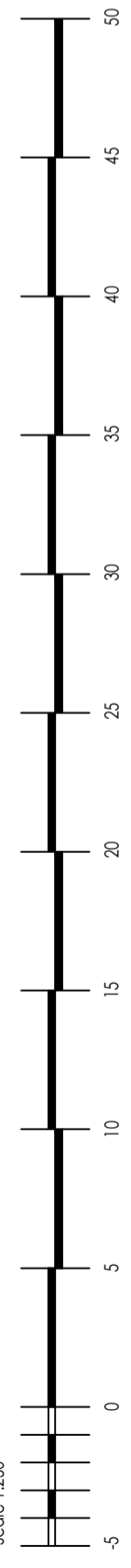


Schematic Section W-W  
 not to scale

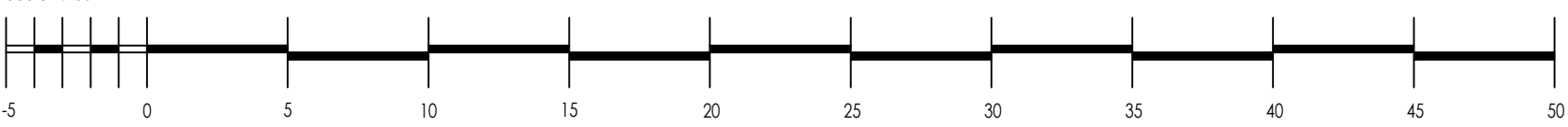
Schematic Section X-X1  
 not to scale



Schematic Section Y-Y  
 not to scale



Scale 1:250



Site Plan  
 S.S. 4280

Scale 1: 2500  
 Map Ref.: 42870  
 80105

**Property No : E269885**

Part of staircase from Level -1 to Level 0:

**A** Area: 2.3m<sup>2</sup>

Site at Level 0, incl. part of staircase from Level -1 to Level 0 only:

**B** Area: 32.3m<sup>2</sup>

Site at Level 1 only:

**C** Area: 14.2m<sup>2</sup>

Site from Level 1 and upwards, incl. airspace:

**D** Area: 58.5m<sup>2</sup>

Note: Sections W-W, X-X1 and Y-Y are only indicative of the floor levels.

**LANDS Authority**  
 Estate Management & Business Development

Auberge de Baviere  
 St. Sebastion Str, Valletta  
 Phone (00356) 2295 3238/39/40/42  
 Website landsauthority.org.mt

Locality: **MELLIEHA**

P.D. No.:	<b>2019_0770</b>	Scale :	<b>1 : 250</b>
File No.:	<b>A/0045/2006</b>	Drawn by :	<b>bugem151</b>

sgd. (S. Scotto)  
 A&CE Date : **30th May, 2022**