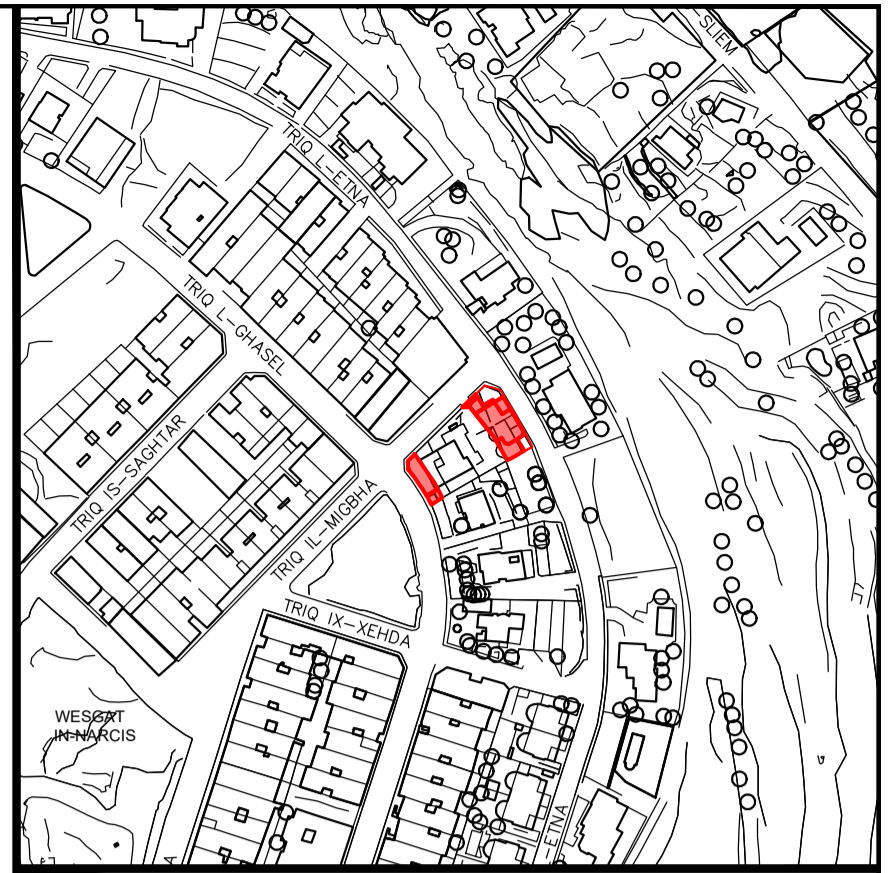
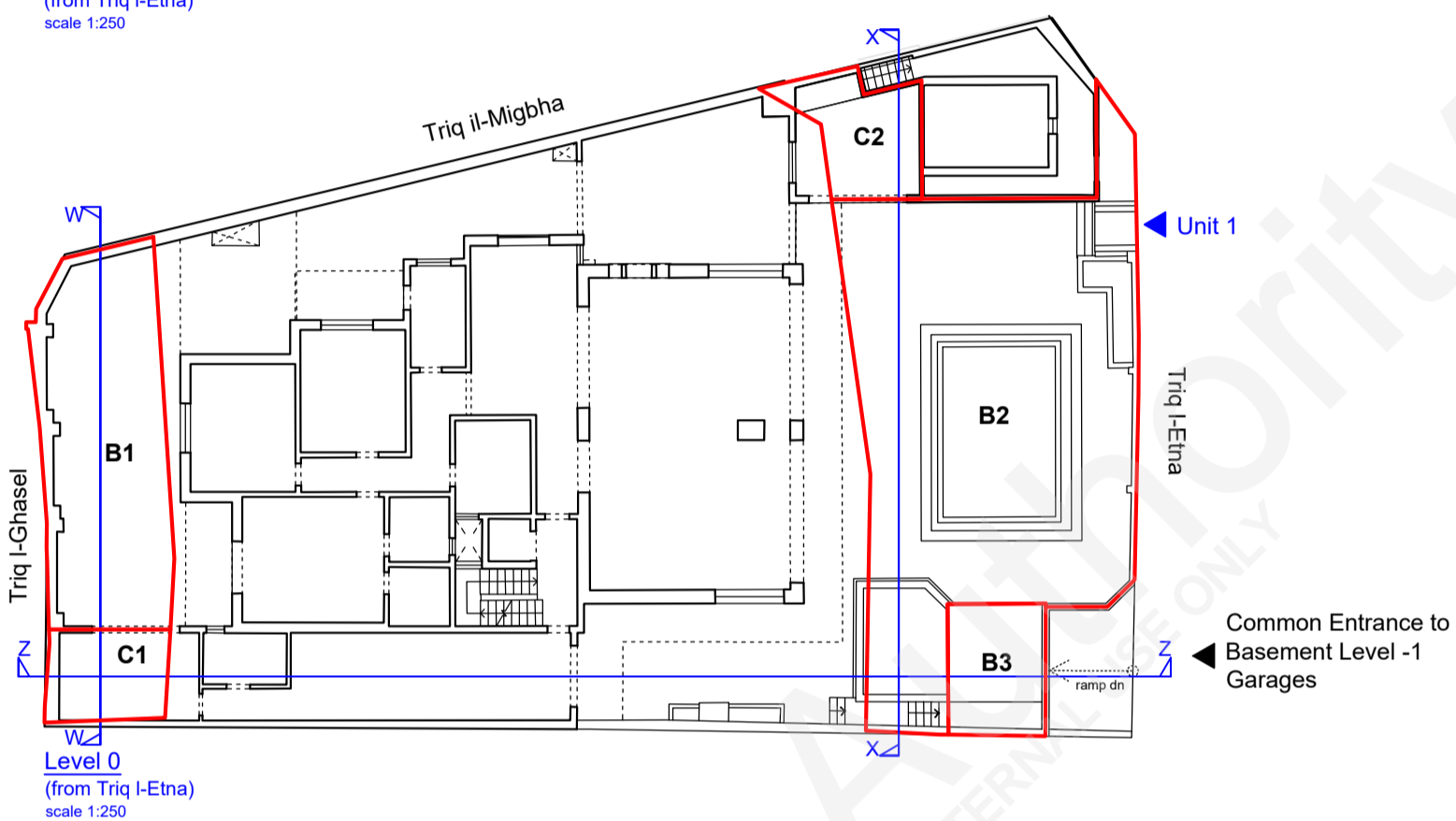
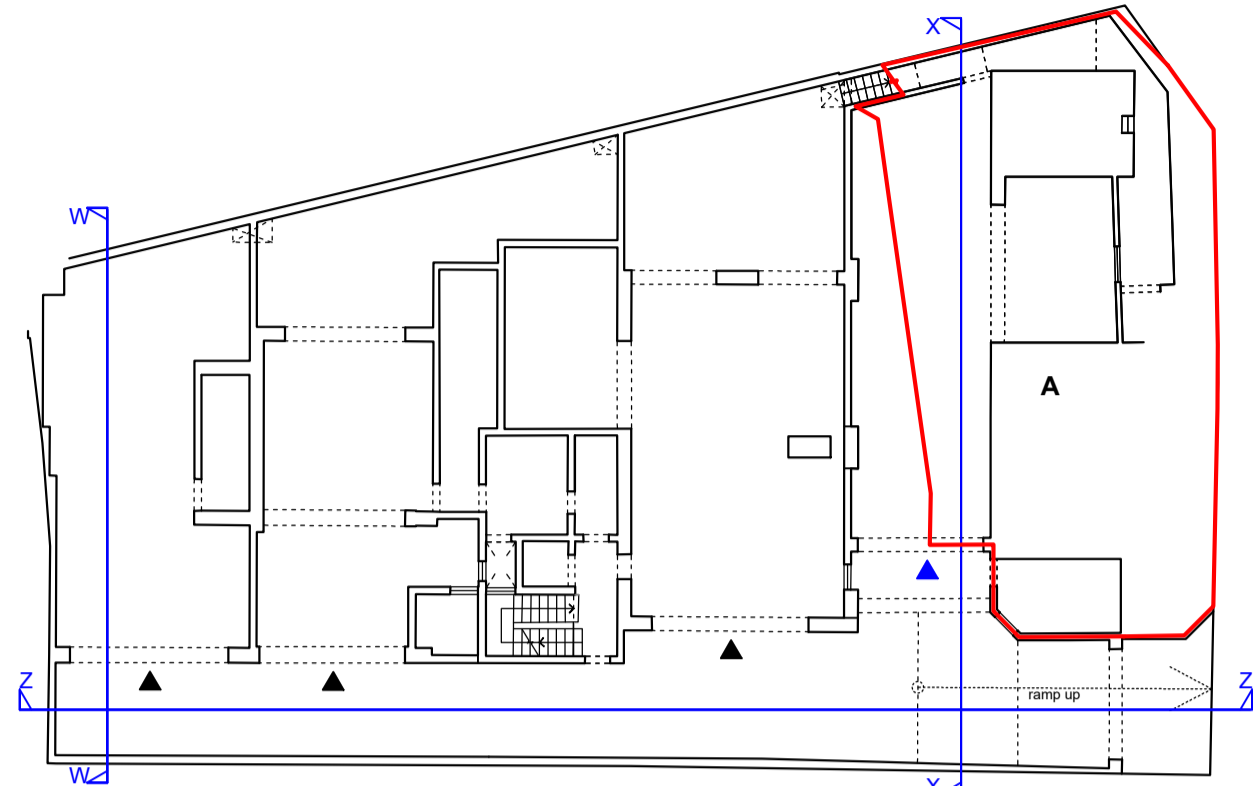
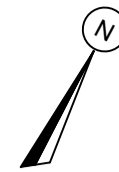


13A

Golden Vista Part of Garage & Unit 1 Accessed from Triq l-Etna c/w Triq il-Migbha c/w Triq l-Ghasel MELLIEHA



Site Plan
S.S. 4280

Scale 1: 2500
Map Ref.: 42870
80105

Property No : E269884

Site up to Level 0, incl. underlying space & space below third-party staircase:

A Area: 191.0m²

Site from Level 0 upwards, incl. airspace:

B1 Area: 58.7m²

B2 Area: 159.4m²

Site from 1.14m above Level 0 upwards, incl. airspace:

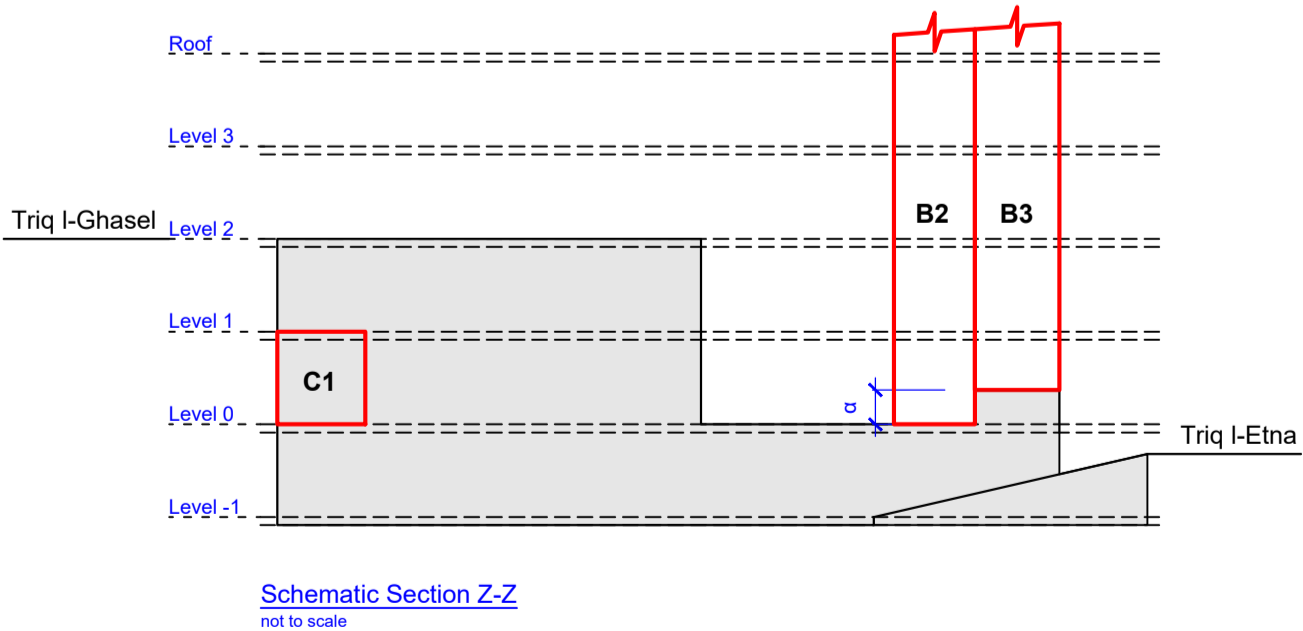
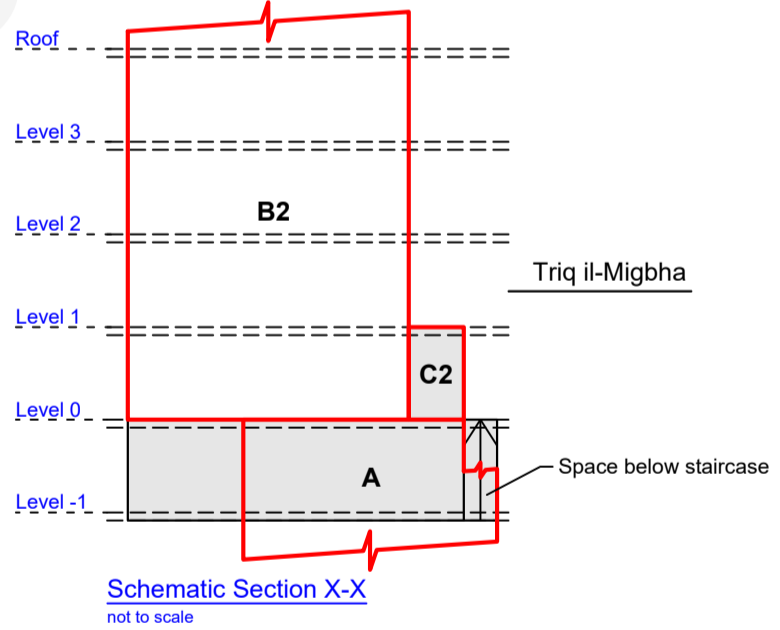
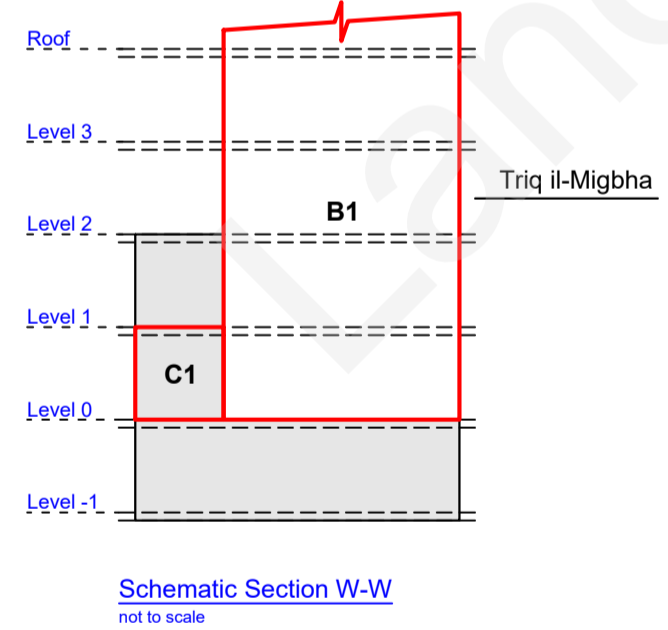
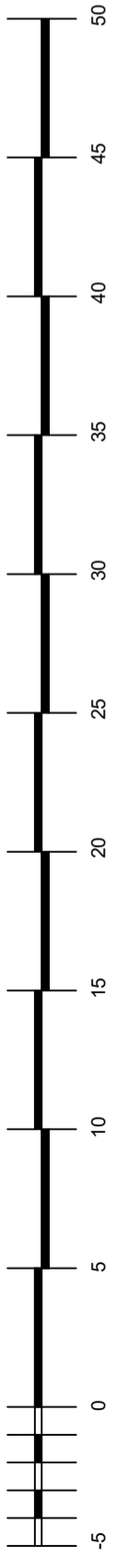
B3 Area: 16.0m²

Site at Level 0 only:

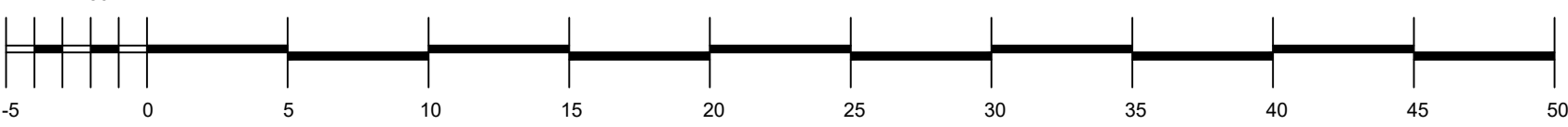
C1 Area: 13.7m²

C2 Area: 16.3m²

Notes:
Sections W-W, X-X and Z-Z are only indicative of the floor levels.
α - A distance of 1.14m above Level 0.



Scale 1:250



Extents interpreted from plans submitted by Architect and Corrected Government Land Registration.

LANDS Authority

Auberge de Baviere
St. Sebastion Str, Valletta
Phone (00356) 2295 3238/39/40/42
Website landsauthority.org.mt

Estate Management & Business Development

Locality: **MELLIEHA**

P.D. No.: **2019_0768** Scale: **1 : 250**

File No.: **A/0045/2006** Drawn by: **bugem151**

sgd. (S. Scotto)
A&CE
Date: **30th May, 2022**